

# 100% AUSTRALIA

Transition to 100% wind, water, and solar (WWS) for all purposes  
(electricity, transportation, heating/cooling, industry)



Residential rooftop solar  
4.8%



Solar plant  
32.9%



Concentrated solar plant  
10%



Onshore wind  
30%



Offshore wind  
6.2%

## 2050

PROJECTED ENERGY MIX



Commercial/govt rooftop solar  
6%



Wave energy  
5%



Geothermal energy  
0.4%



Hydroelectric  
4.5%



Tidal turbine  
0.1%



### 40-Year Jobs Created

Number of jobs where a person is employed for 40 consecutive years

Operation jobs:



**255,744**

Construction jobs:



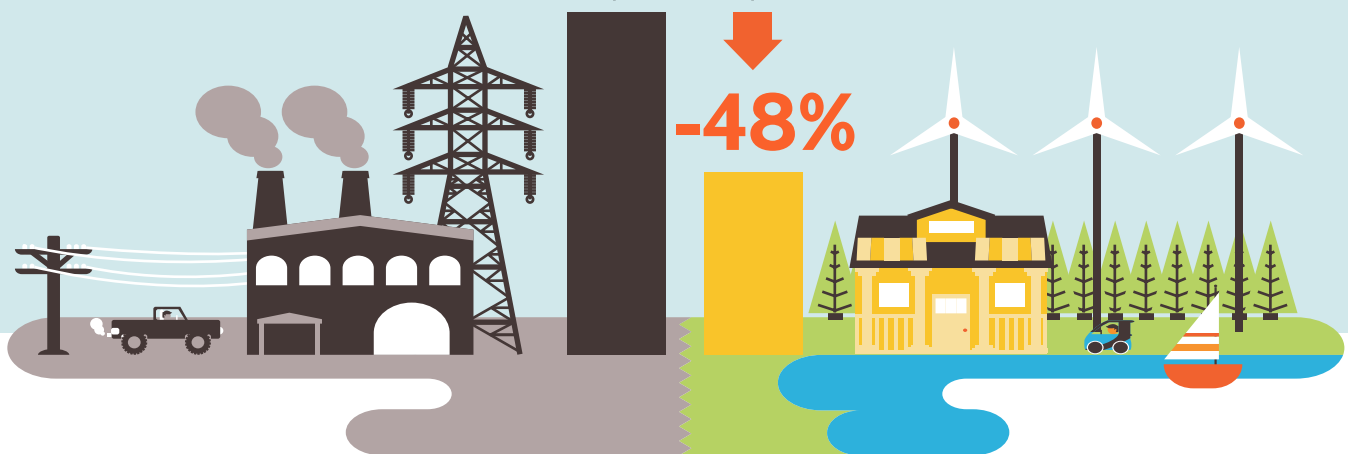
**161,398**

1 icon = 15,000

Using WWS electricity for everything, instead of burning fuel, and improving energy efficiency means you need much less energy.

2050 Demand with BAU

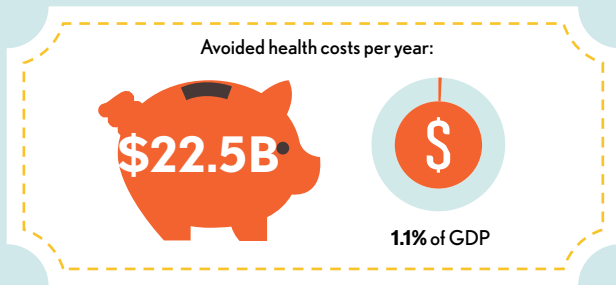
2050 Wind, Water, Solar



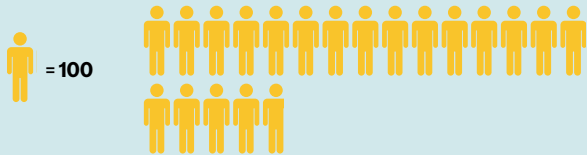
# 100% AUSTRALIA

Transition to 100% wind, water, and solar (WWS) for all purposes  
(electricity, transportation, heating/cooling, industry)

## Avoided Mortality and Illness Costs



Air pollution deaths avoided every year: **1,988**



Plan pays for itself in as little as **1.7** years from air pollution and climate cost savings alone.

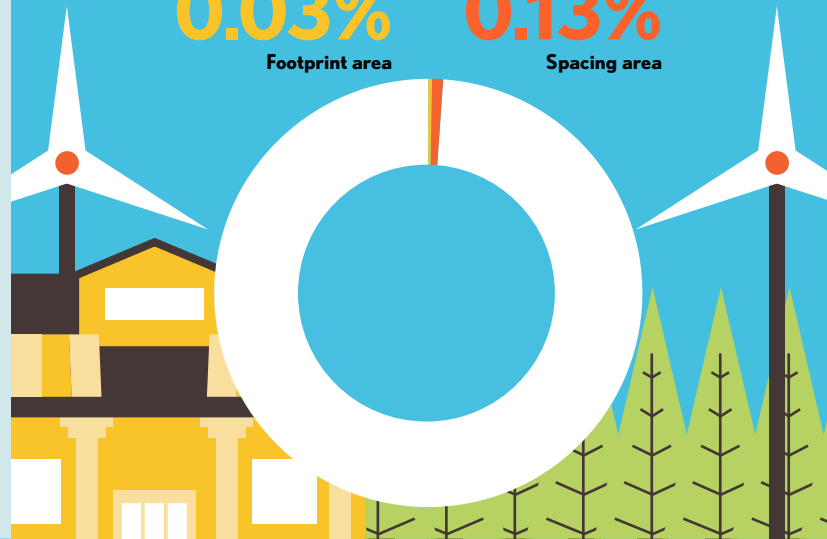
## Percentage of Land Needed for All New WWS Generators

**0.03%**

Footprint area

**0.13%**

Spacing area



## Future Energy Costs 2050

BAU (Business as usual)

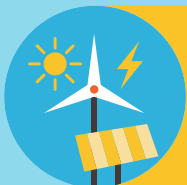
WWS (Wind, water, solar)



Average fossil-fuel energy costs\*

**10.4 c/kWh**

\*Health and climate external costs of fossil fuels are another 5.7c/kWh



Average WWS electricity costs

**8.5 c/kWh**

## Money in Your Pocket

**(P) = \$500**

Annual energy, health, and climate cost savings per person in 2050: **\$7,064**



Annual energy cost savings per person in 2050: **\$418**

